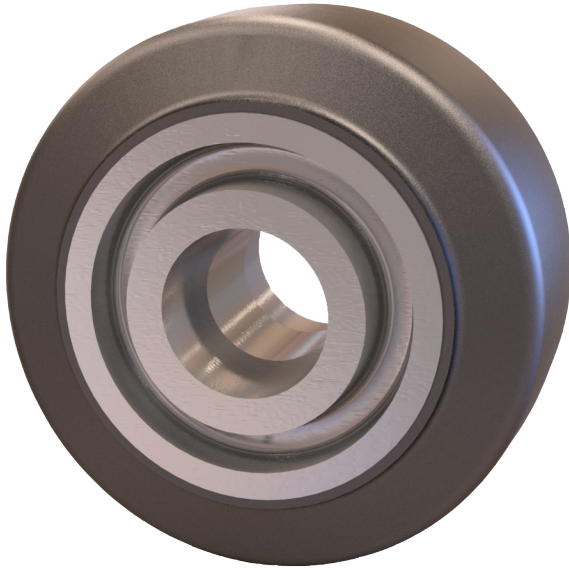




MOLD ON RUBBER WHEELS

3,000 LBS maximum capacity



FEATURES

Bearings: Delrin, oilite, roller, precision ball, tapered.

Temperature: Maximum to 180° F

Durometer: 70 Durometer Shore A

Standard: All 1-1/2" and 2" width wheels with 3/4" roller bearings are supplied with 1/2" spanner bushing.

Caster Concepts offers the highest quality domestic Mold On Rubber wheels. Our mold-on rubber wheels consist of a soft black, 70 durometer rubber tread permanently bonded Class 30 gray iron centers. Mold-on rubber wheels provide excellent floor protection, a cushioned and quiet ride for the product being transported, and they absorb shock and vibration.

APPLICATIONS

Excellent for moist and wet environments, food service equipment, small waste bins, factory use, platform trucks and hotel equipment.



MOLD ON RUBBER WHEELS 3,000 LBS

WHEEL					PART NUMBER			
Dia.	Width	Capacity	Hub Length	Bore	Straight Roller	Precision Tapered	Less Bearing	Wt.
5	2.00	400	2 3/16	1 3/16			<u>05200-70-19</u>	2.50
5	2.00	400	2 3/16	3/4	<u>05201-70-12</u>			2.50
6	2.00	425	2 3/16	1 3/16			<u>06200-70-19</u>	4.50
6	2.00	425	2 3/16	3/4	<u>06201-70-12</u>			4.50
6	2.50	550	3 1/4	1 15/16			<u>06250-70-31</u>	6.50
6	2.50	550	3 1/4	1	<u>06251-70-16</u>			6.50
6	2.50	550	3 1/4	1 1/4	<u>06251-70-20</u>			6.50
6	2.50	550	3 1/2	3/4		<u>06259-70-12</u>		6.50
6	2.50	550	3 1/2	1		<u>06259-70-16</u>		6.50
6	3.00	700	3 1/4	1 15/16			<u>06300-70-31</u>	9.50
6	3.00	700	3 1/4	1	<u>06301-70-16</u>			9.50
6	3.00	700	3 1/4	1 1/4	<u>06301-70-20</u>			9.50
6	3.00	700	3 1/2	3/4		<u>06309-70-12</u>		9.50
6	3.00	700	3 1/2	1		<u>06309-70-16</u>		9.50
8	2.00	500	2 3/16	1 3/16			<u>08200-70-19</u>	7.00
8	2.00	500	2 3/16	3/4	<u>08201-70-12</u>			7.00
8	2.50	700	3 1/4	1 15/16			<u>08250-70-31</u>	9.50
8	2.50	700	3 1/4	1	<u>08251-70-16</u>			9.50
8	2.50	700	3 1/4	1 1/4	<u>08251-70-20</u>			9.50
8	2.50	700	3 1/2	3/4		<u>08259-70-12</u>		9.50
8	3.00	850	3 1/4	1 15/16			<u>08300-70-31</u>	12.50
8	3.00	850	3 1/4	1	<u>08301-70-16</u>			12.50
8	3.00	850	3 1/4	1 1/4	<u>08301-70-20</u>			12.50
8	3.00	850	3 1/2	3/4		<u>08309-70-12</u>		12.50
8	3.00	850	3 1/2	1		<u>08309-70-16</u>		12.50
8	3.00	850	3 1/2	1 1/4		<u>08309-70-20</u>		12.50
10	2.50	800	3 1/4	1 15/16			<u>10250-70-31</u>	13.00
10	2.50	800	3 1/4	1	<u>10251-70-16</u>			13.00
10	2.50	800	3 1/4	1 1/4	<u>10251-70-20</u>			13.00
10	2.50	800	3 1/2	3/4		<u>10259-70-12</u>		13.00
10	2.50	800	3 1/2	1		<u>10259-70-16</u>		13.00
10	3.00	1,000	3 1/4	1 15/16			<u>10300-70-31</u>	16.00
10	3.00	1,000	3 1/4	1	<u>10301-70-16</u>			16.00
10	3.00	1,000	3 1/4	1 1/4	<u>10301-70-20</u>			16.00
10	3.00	1,000	3 1/2	3/4		<u>10309-70-12</u>		16.00
10	3.00	1,000	3 1/2	1		<u>10309-70-16</u>		16.00
10	4.00	1,400	4 1/4	2 7/16			<u>10400-70-39</u>	33.00
10	4.00	1,400	4 1/4	1 1/4	<u>10401-70-20</u>			33.00
10	4.00	1,400	4 1/4	1 1/2	<u>10401-70-24</u>			33.00
10	4.00	1,400	4 1/2	1		<u>10409-70-16</u>		33.00
10	4.00	1,400	4 1/2	1 1/4		<u>10409-70-20</u>		33.00

MOLD ON RUBBER WHEELS 3,000 LBS



MOLD ON RUBBER WHEELS

WHEELS

WHEEL					PART NUMBER			
Dia.	Width	Capacity	Hub Length	Bore	Straight Roller	Precision Tapered	Less Bearing	Wt.
12	2.50	900	3 1/4	1 15/16			<u>12250-70-31</u>	15.50
12	2.50	900	3 1/4	1	<u>12251-70-16</u>			15.50
12	2.50	900	3 1/4	1 1/4	<u>12251-70-20</u>			15.50
12	2.50	900	3 1/2	3/4		<u>12259-70-12</u>		15.50
12	2.50	900	3 1/2	1		<u>12259-70-16</u>		15.50
12	3.00	1,125	3 1/4	1 15/16			<u>12300-70-31</u>	21.00
12	3.00	1,125	3 1/4	1	<u>12301-70-16</u>			21.00
12	3.00	1,125	3 1/4	1 1/4	<u>12301-70-20</u>			21.00
12	3.00	1,150	3 1/2	3/4		<u>12309-70-12</u>		21.00
12	3.00	1,150	3 1/2	1		<u>12309-70-16</u>		21.00
12	4.00	1,600	4 1/4	2 7/16			<u>12400-70-39</u>	30.00
12	4.00	1,600	4 1/4	1 1/4	<u>12401-70-20</u>			30.00
12	4.00	1,600	4 1/4	1 1/2	<u>12401-70-24</u>			30.00
12	4.00	1,600	4 1/2	1		<u>12409-70-16</u>		30.00
12	4.00	1,600	4 1/2	1 1/4		<u>12409-70-20</u>		30.00
16	4.00	1,450	4 1/4	2 7/16			<u>16400-70-39</u>	40.00
16	4.00	1,450	4 1/4	1 1/4	<u>16401-70-20</u>			40.00
16	4.00	1,450	4 1/4	1 1/2	<u>16401-70-24</u>			40.00
16	4.00	1,450	4 1/2	1		<u>16409-70-16</u>		40.00
16	4.00	1,450	4 1/2	1 1/4		<u>16409-70-20</u>		40.00
16	5.00	1,500	5 1/4	2 7/16			<u>16500-70-39</u>	72.00
16	5.00	1,500	5 1/4	1 1/4	<u>16501-70-20</u>			72.00
16	5.00	1,500	5 1/4	1 1/2	<u>16501-70-24</u>			72.00
16	5.00	1,500	5 1/2	1		<u>16509-70-16</u>		72.00
16	5.00	1,500	5 1/2	1 1/4		<u>16509-70-20</u>		72.00
18	5.00	2,800	5 1/4	2 7/16			<u>18500-70-39</u>	90.00
18	5.00	2,800	5 1/4	1 1/4	<u>18501-70-20</u>			90.00
18	5.00	2,800	5 1/4	1 1/2	<u>18501-70-24</u>			90.00
18	5.00	2,800	5 1/4	3 1/4			<u>18500-70-50</u>	90.00
18	5.00	2,800	5 1/4	2	<u>18501-70-32</u>			90.00
18	5.00	2,800	5 1/2	1		<u>18509-70-16</u>		90.00
18	5.00	2,800	5 1/2	1 1/4		<u>18509-70-20</u>		90.00
18	5.00	2,800	5 1/2	1 1/2		<u>18509-70-24</u>		90.00
20	5.00	3,000	5 1/4	2 7/16			<u>20500-70-39</u>	100.00
20	5.00	3,000	5 1/4	1 1/4	<u>20501-70-20</u>			100.00
20	5.00	3,000	5 1/4	1 1/2	<u>20501-70-24</u>			100.00
20	5.00	3,000	5 1/4	3 1/4			<u>20500-70-50</u>	100.00
20	5.00	3,000	5 1/4	2	<u>20501-70-32</u>			100.00
20	5.00	3,000	5 1/2	1		<u>20509-70-16</u>		100.00
20	5.00	3,000	5 1/2	1 1/4		<u>20509-70-20</u>		100.00
20	5.00	3,000	5 1/2	1 1/2		<u>20509-70-24</u>		100.00