



FLANGED WHEELS

12,000 LBS maximum capacity



Item Shown: 08209-28-16

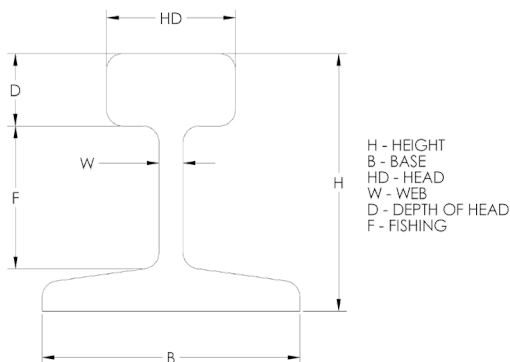
BENEFITS

The flanged wheel is designed to operate on steel tracking to minimize guidance and rolling effort. These wheels are constructed of premium cast iron and steel for high strength and long wear.

Various bore sizes are available for use with keyway or a variety of bearings.

APPLICATIONS

Flanged wheels are excellent for precise alignment of work, captive turntables or repetitive processes, including foundry cooling lines.

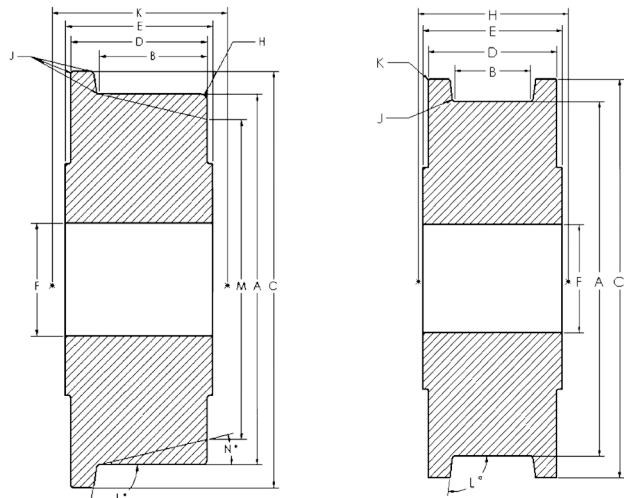


FEATURES

Bearings: Roller, tapered.

Temperature: Maximum to 800° F with proper bearing and lubrication.

Standard: All 1-1/2" and 2" width wheels with 3/4" roller bearing are supplied with 1/2" spanner bushing.



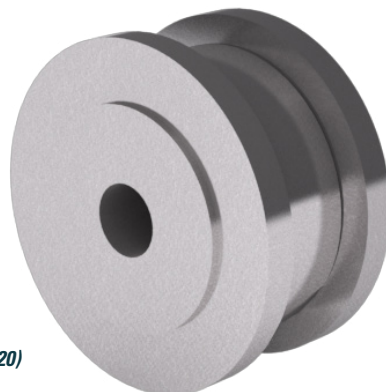
Rail Sizes						
Weight	Dimensions					
LB/FT	H	B	HD	W	D	F
12	2	2	1	3/16	9/16	1-1/32
16	2-3/8	2-3/8	1-11/64	7/32	41/64	1-23/64
20	2-5/8	2-5/8	1-11/32	1/4	23/32	1-15/32
25	2-3/4	2-3/4	1-1/2	19/64	25/32	1-31/64
30	3-1/8	3-1/8	1-11/16	21/64	7/8	1-23/32
40	3-1/2	3-1/2	1-7/8	25/64	1-1/64	1-55/64
60	4-1/4	4-1/4	2-3/8	31/64	1-7/32	2-17/64
80	5	5	2-1/2	35/64	1-1/2	2-5/8
85	5-3/16	5-3/16	2-9/16	9/16	1-35/64	2-3/4
90	5-5/8	5-1/8	2-9/16	9/16	1-15/32	3-5/32
100	6	5-3/8	2-11/16	9/16	1-21/32	3-9/32



FLANGED WHEELS 12,000 LBS

WHEEL								PART NUMBER			
Dia. A	Width B	Dia. C	Width D	Capacity	Hub Length E	Bore F	Hub Dia. G	Straight Roller	Precision Tapered	Less Bearing	Wt.
Single Flanged Wheels											
3.50	1.31	4.50	1.69	1,000	1 15/16	3/4	2 1/8	<u>03101-18-12</u>			5.00
3.50	1.31	4.50	1.69	1,000	1 15/16	1 3/16	2 1/8			<u>03100-18-19</u>	5.00
4.00	2.00	5.25	3.00	5,000	3 1/2	1	2 1/2		<u>04209-18-16</u>		10.00
4.50	2.25	5.50	3.00	5,000	3 1/4	2 7/16	2 1/2			<u>04258-18-39</u>	15.00
4.50	2.25	5.50	3.00	5,000	3 1/2	1	3 3/4		<u>04259-18-16</u>		15.00
4.50	2.25	5.50	3.00	5,000	3 1/2	1 1/4	3 3/4		<u>04259-18-20</u>		15.00
4.50	2.25	5.50	3.00	5,000	3 1/4	1 15/16	3 3/4			<u>04250-18-31</u>	15.00
4.50	2.25	5.50	3.00	4,000	3 1/4	1	3 3/4	<u>04251-18-16</u>			15.00
4.50	2.25	5.50	3.00	4,000	3 1/4	1 1/4	3 3/4	<u>04251-18-20</u>			15.00
5.00	2.06	6.00	2.69	6,000	3 1/4	1 1/4	3 7/8	<u>05201-28-20</u>			15.00
5.00	2.06	6.00	2.69	6,000	3 1/4	1 1/2	3 7/8	<u>05201-28-24</u>			15.00
5.00	2.06	6.00	2.69	10,000	3 1/4	2 7/16	3 7/8			<u>05208-28-39</u>	15.00
5.00	2.06	6.00	2.69	10,000	3 1/2	1	3 7/8		<u>05209-28-16</u>		15.00
5.00	2.06	6.00	2.69	10,000	3 1/2	1 1/4	3 7/8		<u>05209-28-20</u>		15.00
6.00	1.63	6.75	2.00	900	2 3/16	1 3/16	1 3/4			<u>06150-18-19</u>	18.00
6.00	1.63	6.75	2.00	900	2 3/16	3/4	1 3/4	<u>06151-18-12</u>			18.00
6.13	1.69	7.00	2.13	5,000	2 3/4	1 15/16	3			<u>06200-18-31</u>	24.00
6.13	1.69	7.00	2.13	4,000	2 3/4	1 1/4	3	<u>06201-18-20</u>			24.00
6.13	1.69	7.00	2.13	5,000	3	3/4	3		<u>06209-18-12</u>		24.00
6.13	1.69	7.00	2.13	5,000	3	1	3		<u>06209-18-16</u>		24.00
6.00	2.00	7.00	2.75	3,500	3 1/4	1 15/16	3			<u>06250-18-31</u>	20.50
6.00	2.00	7.00	2.75	3,500	3 1/4	1	3	<u>06251-18-16</u>			20.50
6.00	2.00	7.00	2.75	3,500	3 1/4	1 1/4	3	<u>06251-18-20</u>			20.50
6.00	2.00	7.00	2.75	3,500	3 1/2	3/4	3		<u>06259-18-12</u>		20.50
6.00	2.00	7.00	2.75	3,500	3 1/2	1	3		<u>06259-18-16</u>		20.50
7.87	2.25	9.25	2.75	3,500	3 1/4	2 7/16	3 3/4			<u>07250-18-39</u>	29.00
7.87	2.25	9.25	2.75	3,500	3 1/4	1 1/4	3 3/4	<u>07251-18-20</u>			29.00
7.87	2.25	9.25	2.75	3,500	3 1/4	1 1/2	3 3/4	<u>07251-18-24</u>			29.00
7.87	2.25	9.25	2.75	3,500	3 1/2	1	3 3/4		<u>07259-18-16</u>		29.00
7.87	2.25	9.25	2.75	3,500	3 1/2	1 1/4	3 3/4		<u>07259-18-20</u>		29.00
7.87	1.75	8.63	2.25	3,000	2 1/2	1 3/16	2 7/8			<u>08200-18-19</u>	27.00
7.87	1.75	8.63	2.25	3,000	2 1/2	1 15/16	2 7/8			<u>08200-18-31</u>	27.00
7.87	1.75	8.63	2.25	3,000	2 1/2	3/4	2 7/8	<u>08201-18-12</u>			27.00
7.87	1.75	8.63	2.25	3,000	2 1/2	1	2 7/8	<u>08201-18-16</u>			27.00
7.87	1.75	8.63	2.25	3,000	2 1/2	1 1/4	2 7/8	<u>08201-18-20</u>			27.00
7.87	1.75	8.63	2.25	3,000	2 3/4	3/4	2 7/8		<u>08209-18-12</u>		27.00
8.00	2.38	9.00	3.00	15,000	3 1/4	2 7/16	5			<u>08200-28-39</u>	48.00
8.00	2.38	9.00	3.00	6,000	3 1/4	1 1/4	5	<u>08201-28-20</u>			48.00
8.00	2.38	9.00	3.00	6,000	3 1/4	1 1/2	5	<u>08201-28-24</u>			48.00
8.00	2.38	9.00	3.00	10,000	3 1/2	1	5		<u>08209-28-16</u>		48.00
8.00	2.38	9.00	3.00	10,000	3 1/2	1 1/4	5		<u>08209-28-20</u>		48.00

WHEEL								PART NUMBER			
Dia. A	Width B	Dia. C	Width D	Capacity	Hub Length E	Bore F	Hub Dia. G	Straight Roller	Precision Tapered	Less Bearing	Wt.
8.00	2.25	9.50	3.00	3,500	3 1/4	2 7/16	3 3/4			<u>08250-18-39</u>	33.00
8.00	2.25	9.50	3.00	3,500	3 1/4	1 1/4	3 3/4	<u>08251-18-20</u>			33.00
8.00	2.20	9.50	3.00	3,500	3 1/4	1 1/2	3 3/4	<u>08251-18-24</u>			33.00
8.00	2.25	9.50	3.00	3,500	3 1/2	1	3 3/4		<u>08259-18-16</u>		33.00
8.00	2.25	9.50	3.00	3,500	3 1/2	1 1/4	3 3/4		<u>08259-18-20</u>		33.00
10.00	4.00	12.00	5.00	12,000	6	3 1/8	4 1/2			<u>10408-18-50</u>	90.00
10.00	4.00	12.00	5.00	12,000	6 1/4	1 1/4	4 1/2		<u>10409-18-20</u>		90.00
10.00	4.00	12.00	5.00	12,000	6 1/4	1 1/2	4 1/2		<u>10409-18-24</u>		90.00
14.88	2.56	16.88	3.38	8,000	4 1/4	2 7/16	4 1/2			<u>15250-18-39</u>	100.00
14.88	2.56	16.88	3.38	8,000	4 1/4	1 1/4	4 1/2	<u>15251-18-20</u>			100.00
14.88	2.56	16.88	3.38	8,000	4 1/4	1 1/2	4 1/2	<u>15251-18-24</u>			100.00
14.88	2.56	16.88	3.38	8,000	4 1/2	1	4 1/2		<u>15259-18-16</u>		100.00
14.88	2.56	16.88	3.38	8,000	4 1/2	1 1/4	4 1/2		<u>15259-18-20</u>		100.00
Dual Flanged Wheels											
5.00	1.69	6.00	3.00	10,000	3 1/4	2 7/16	3 7/8			<u>05200-29-39</u>	17.00
5.00	1.69	6.00	3.00	6,000	3 1/4	1 1/4	3 7/8	<u>05201-29-20</u>			17.00
5.00	1.69	6.00	3.00	6,000	3 1/4	1 1/2	3 7/8	<u>05201-29-24</u>			17.00
5.00	1.69	6.00	3.00	10,000	3 1/2	1	3 7/8		<u>05209-29-16</u>		17.00
5.00	1.69	6.00	3.00	10,000	3 1/2	1 1/4	3 7/8		<u>05209-29-20</u>		17.00
6.00	2.13	7.25	3.00	6,000	3 1/4	1 15/16	3			<u>06200-19-31</u>	26.00
6.00	2.13	7.25	3.00	5,000	3 1/4	1	3	<u>06201-19-16</u>			26.00
6.00	2.13	7.25	3.00	5,000	3 1/4	1 1/4	3	<u>06201-19-20</u>			26.00
6.00	2.13	7.25	3.00	5,000	3 1/2	3/4	3		<u>06209-19-12</u>		26.00
6.00	2.13	7.25	3.00	6,000	3 1/2	1	3		<u>06209-19-16</u>		26.00
8.00	1.76	9.00	3.00	15,000	3 1/4	2 7/16	5			<u>08200-29-39</u>	50.00
8.00	1.76	9.00	3.00	6,000	3 1/4	1 1/4	5	<u>08201-29-20</u>			50.00
8.00	1.76	9.00	3.00	6,000	3 1/4	1 1/2	5	<u>08201-29-24</u>			50.00
8.00	1.76	9.00	3.00	15,000	3 1/4	2 7/16	5			<u>08208-29-39</u>	50.00
8.00	1.76	9.00	3.00	10,000	3 1/2	1	5		<u>08209-29-16</u>		50.00
8.00	1.76	9.00	3.00	10,000	3 1/2	1 1/4	5		<u>08209-29-20</u>		50.00
10.00	3.00	12.00	5.00	12,000	6	3 1/8	4 1/2			<u>10308-19-50</u>	95.00
10.00	3.00	12.00	5.00	12,000	6 1/4	1 1/4	4 1/2		<u>10309-19-20</u>		95.00
10.00	3.00	12.00	5.00	12,000	6 1/4	1 1/2	4 1/2		<u>10309-19-24</u>		95.00



(ITEM SHOWN: 05201-29-20)